

MONTHLY MEETING SCHEDULE

August 2007

| SUN | MON | TUE | WED | THU | FRI | SAT |
|-----|-----|-----|----------|--------|-----|-----|
| | | | 1 | 2 MPC | 3 | 4 |
| 5 | 6 | 7 | 8 | 9 TAC | 10 | 11 |
| 12 | 13 | 14 | 15 ADMIN | 16 | 17 | 18 |
| 19 | 20 | 21 | 22 | 23 | 24 | 25 |
| 26 | 27 | 28 | 29 | 30 BZA | 31 | |

September 2007

| SUN | MON | TUE | WED | THU | FRI | SAT |
|-----|-----------------|-----|----------|--------|-----|-----|
| | | | | | | 1 |
| 2 | 3 Office Closed | 4 | 5 | 6 MPC | 7 | 8 |
| 9 | 10 | 11 | 12 | 13 TAC | 14 | 15 |
| 16 | 17 | 18 | 19 ADMIN | 20 | 21 | 22 |
| 23 | 24 | 25 | 26 | 27 BZA | 28 | 29 |
| 30 | | | | | | |

October 2007

| SUN | MON | TUE | WED | THU | FRI | SAT |
|-----|-----------------|-----|----------|--------|-----|-----|
| | 1 | 2 | 3 | 4 MPC | 5 | 6 |
| 7 | 8 Office Closed | 9 | 10 | 11 TAC | 12 | 13 |
| 14 | 15 | 16 | 17 ADMIN | 18 | 19 | 20 |
| 21 | 22 | 23 | 24 | 25 BZA | 26 | 27 |
| 28 | 29 | 30 | 31 | | | |

November 2007

| SUN | MON | TUE | WED | THU | FRI | SAT |
|-----|------------------|-----------------|----------|------------------|------------------|-----|
| | | | | 1 MPC | 2 | 3 |
| 4 | 5 | 6 Office Closed | 7 | 8 TAC | 9 | 10 |
| 11 | 12 Office Closed | 13 | 14 | 15 | 16 | 17 |
| 18 | 19 | 20 | 21 ADMIN | 22 Office Closed | 23 Office Closed | 24 |
| 25 | 26 | 27 | 28 | 29 BZA | 30 | |

ADMIN
Administrative Committee
Mayor's Office, City Hall
1:30 p.m.

BZA
Board of Zoning Appeals
Commissioner's Court Room,
County Building
6:30 p.m.

MPC
Metropolitan Plan Commission
Commissioner's Court Room,
County Building
6:30 p.m.

TAC
Technical Advisory Committee
Plan Commission, County
Building
10:00 a.m.

DELAWARE-MUNCIE METROPOLITAN PLAN COMMISSION

DMMPC
100 W MAIN ST
MUNCIE IN 47305

Phone: 765-747-7740
Fax: 765-747-7744
Email: mgervolino@co.delaware.in.us



Visit us on the web at
www.co.delaware.in.us

PRESORTED
STANDARD
U.S. POSTAGE PAID
MUNCIE, INDIANA
PERMIT NO. 540



DELAWARE-MUNCIE METROPOLITAN PLAN COMMISSION



PLAN NEWS

Volume 12, Issue 3
Summer 2007

TIP AND TRANSPORTATION PLAN UPDATE

The FY 2007-2010 Delaware Muncie Transportation Improvement Program (TIP) and 2005-2030 Transportation Plan were amended in June 2007 by the Plan Commission after public input in March-April and action by the transportation committees in May.

The changes made to the Transportation Plan brought it into compliance with SAFETEA-LU requirements on visualization of planned projects and environmental mitigation consideration. There were also changes involving state highway projects that delayed, scaled back, or deleted some planned expansion-related projects. The Air Quality Conformity analyses were recalculated for those changes and the results were within the mobile source emissions budget for Delaware County as specified in the State Implementation Program (SIP) and as required by the Federal Highway Administration and the Environmental Protection Agency (EPA).

The TIP amendment also added rural projects from the State's TIP (STIP) as a result of expanding the Muncie Metropolitan Planning Area (MMPA). The Indiana Department of Transportation approved the expanded MMPA in late July, after local approval of it in December 2006. The air quality conformity effort requires consideration of all STIP projects within Delaware County so the MMPA was expanded to include all rural areas, including small towns, within Delaware County.

The current TIP document and Transportation Plan can be accessed on our website:
www.co.delaware.in.us/Departments/PlanCommission2/

TRAFFIC COUNTS

Planners MaryAnn Gervolino and Cheryl McGairk of the Delaware-Muncie Metropolitan Plan Commission began collecting traffic count data for Delaware County and the Muncie area in April of 2007 and will complete them in late October. The counts are done in accordance with the guidelines mandated by the Indiana Department of Transportation. To date the Plan Commission staff have completed counts at approximately eighty locations. Some of those locations include Bethel Avenue, Broadway Avenue, Princeton Avenue, Morrison Road, Nebo Road, Jackson Street, Memorial Drive, McGalliard Road and Riggins Road. The information collected for these locations has been added to the traffic count system and are available at the Plan Commission office.

Inside this issue:

| | |
|--------------------------|---|
| Trans. Coordination Plan | 2 |
| Prairie Creek Update | 3 |
| Transit Update | 3 |
| County Website | 3 |

PUBLIC KIOSK

The DMMPC has a public computer available in its front office. This allows the public to view addresses, parcel numbers, property lines as well as many other geographical features within Delaware County. The Public can also produce their own maps (8.5 x 11) for \$1.00 per print. Staff members will be on hand to help you with any questions you might have.

TRANSPORTATION COORDINATION PLAN

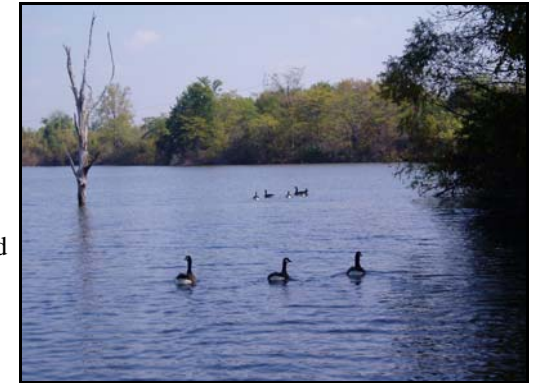
This spring the Delaware-Muncie Metropolitan Plan Commission took the lead role in initiating the development of a local Public Transit-Human Services Coordination Plan for Delaware County. The development of such a plan is necessary for the Section 5310 Elderly Individuals with Disabilities Program, Section 5316 Job Access and Reverse Commute Program (JARC) and Section 5317 New Freedom Program, all funding programs set forth in the Safe, Accountable, Flexible, Efficient Transportation Equity Act: A Legacy for Users (SAFETEA-LU) federal authorization act. Drawing on members of the Transportation Advisory Committee and other interested persons, a steering committee group was formed to guide the creation of this plan.

Section 5310, 5316 and 5317 programs provide grant funding for local transportation services and capital projects to meet the special needs of targeted populations. The Section 5310 Program provides grant funding for the purchase of buses, vans and related equipment and other expenses related to providing for the transportation needs of elderly and disabled persons for whom other transportation services are either not available or are insufficient to meet those needs. Grant funds are distributed on an annual basis with an 80 percent federal and 20 percent local match. The Section 5316 Program is a grant fund program to help local governments and non-profit agencies provide welfare recipients and low-income persons with transportation to and from jobs (Job Access) and to provide transportation services that enable urban residents to journey to suburban employment locations (Reverse Commute). Grant funds can be used for capital expenses and operating costs associated with providing transportation services. Costs to promote late night and weekend transit service for workers with nontraditional work schedules, the use of transit vouchers, demand-responsive service and employer-provided transportation are also covered. Other costs covered include supporting administration services for GIS tools, intelligent transportation systems (ITS), scheduling and dispatch functions and transportation brokerage activities. The federal/local share for this program is 80/20 for capital expenses and 50/50 for operating costs. Matching funds may come from any non-US Department of Transportation (U.S. DOT) Federal funds that include transportation as a permitted use. The Section 5317 Program is for public or alternative transportation services and facility improvements to meet the needs of persons with disabilities going beyond the minimum requirements of the Americans with Disabilities Act (ADA). Funds may be used to make system improvements that enhance accessible public transportation including, but not limited to, travel training, purchasing accessible vehicles and accessibility improvements to facilities. The federal/ local share for this program is 80/20 for capital expenses and 50/50 for operating expenses. The Indiana Department Of Transportation (INDOT) administers the 5310, 5316 and 5317 programs.

The success of this planning process depends on the cooperation and input of all major stakeholders. SAFETEA-LU stipulates that in order for projects to be funded through the above mentioned programs they must be derived from a locally developed coordinated public transit-human services transportation plan "developed through a process that includes representatives of public, private and nonprofit transportation and human service providers and participation by the public". County Commissioner John Brooke sponsored a Transportation Summit Meeting April 23 that was well attended. The agenda included several presentations and opportunities for public input. A group of providers, advocates and human service agency representatives met twice to do a self-assessment of Delaware County's transportation services using the Federal Transit Administration's (FTA) Framework For Action tool. This helped identify areas for which improvement is needed. Surveys were sent out to providers to help establish an inventory of transportation resources. A public transportation consumer survey was distributed at the public meetings and staff made trips to various locations including Forest Park Senior Center, MITS Transfer Station and Hillcroft Center to collect input. The plan document is currently being written by DMMPC staff and will be submitted to the steering committee for approval next month.

PRAIRIE CREEK MASTER PLAN - UPDATE

The Prairie Creek Master Plan, a joint effort between the Delaware-Muncie Metropolitan Plan Commission and the Delaware County Soil and Water Conservation District, has now entered the implementation phase. During the spring, the draft document was provided to members of the Prairie Creek Master Plan Steering Committee, the Delaware County Soil and Water Conservation District, and the Delaware-Muncie Metropolitan Plan Commission for review.



During the month of May the Plan was presented to the White River Watershed Project's steering committee, the Delaware County Soil and Water Conservation District, and the Ball Brother's Foundation for additional feedback. During the month of June and the beginning of July, the Plan was presented to the Delaware-Muncie Metropolitan Plan Commission, the Delaware County Commissioners, Muncie's Park Board, and Muncie's City Council for approval. The Prairie Creek Master Plan was received well and was unanimously approved by each group!

The Prairie Creek Master Plan is currently available online at http://www.co.delaware.in.us/watershed/PC_master_plan.htm. It is available to download in its entirety or in sections. All downloads are available in both a double page book layout or in a single page printable format.

TRANSIT UPDATE

The Muncie Indiana Transit System (MITS) was notified by APTA that it won the 2007 Gold Award for the best overall safety record in the 1-4 million passenger transit system category.

The mobile computer terminals (MCDs) have been installed in the MITSPlus vans and began use in June. MITSPlus is the Muncie door-to-door transit service for riders with disabilities. The schedulers have become more proficient after completing training on the software, which schedules trips and connects with the MCDs. The new software has resulted in more efficiency in scheduling trips, which has allowed MITSPlus trips to increase without increasing driver and van resources.

A New InterUrban Rider Guide was developed and is available. It specifies transit policies on fares for differing trip lengths, passenger behavior, what passengers can bring with them, service connections with MITS, and other items. The new rider guide will help inform people on how they can use the transit service and what is expected of them. The New Interurban serves a multi-county area of Delaware, Jay, Randolph, Blackford, Henry, Madison, and Grant Counties. Riders of all ages may ride except in Grant County, which serves only those over 59 years of age. The service provided in each county is separate, but trip connections between counties are available. The New InterUrban and Muncie Indiana Transit System (MITS) bus routes accept transfers from each other. These transit services connect, but do not overlap. MITS provides public transit service within Muncie and the New InterUrban serves outside Muncie including trips into the edge of Muncie and to Ball Memorial Hospital.

NEW LOOK FOR THE COUNTY WEBSITE

Delaware County employees and eGov Strategies are currently working together to complete the new interactive website. It's anticipated the website will be operational by September 1st. Along with a new look, the website will be more user friendly, with new features such as an online survey area, a document center with areas for the Plan Commission and Transportation related projects, a countywide event calendar, and action center.