

RESOLUTION NO. 2016-007
RESOLUTION OF APPROVAL FOR THE
2015 CHANGES TO THE OFFICIAL ZONE MAPS
FOR DELAWARE COUNTY, INDIANA

ORIGINAL

WHEREAS, Official Zone Map excerpts have been presented to the Board of County Commissioners of Delaware County, Indiana, showing the location of all zoning changes acted upon by the Delaware-Muncie Metropolitan Plan Commission and adopted by the Board of County Commissioners of Delaware County, Indiana, during the year 2015, along with a listing of said changes, briefly described for identification, attached herein as Exhibit "A"; and

WHEREAS, in accordance with the Delaware County Comprehensive Zoning Ordinance, the Official Zone Maps for Delaware County, Indiana showing the location of all zoning changes adopted during the year 2015, were submitted to the Delaware-Muncie Metropolitan Plan Commission for its consideration; and

WHEREAS, the Delaware-Muncie Metropolitan Plan Commission found the Official Zone Maps to be correct in reflecting the zone changes adopted during the year 2015 and approved said maps as such on the 4th day of February, 2016; and

WHEREAS, the Delaware County Comprehensive Zoning Ordinance requires that the Board of County Commissioners of Delaware County, Indiana approve said maps as incorporating all zoning changes adopted during the year 2015; and

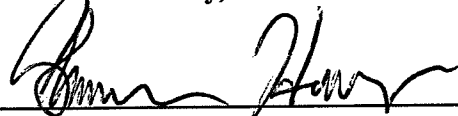
WHEREAS, the said Official Zone Maps for Delaware County, Indiana reflect the correct zone changes adopted during the year 2015.

NOW, THEREFORE, BE IT RESOLVED BY THE BOARD OF COMMISSIONERS OF DELAWARE COUNTY, INDIANA, AS FOLLOWS:

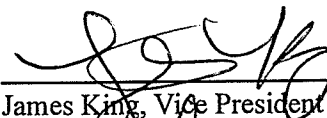
Section 1 That the 2015 Official Zone Map changes are hereby endorsed and incorporated as part of the Official Zone Maps for Delaware County, Indiana.

Section 2 That this resolution shall be in full force and effect from and after its passage by the Board of County Commissioners of Delaware County, Indiana this 15 day of February, 2016.

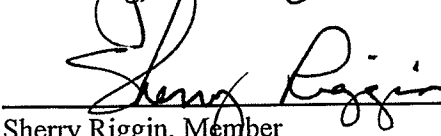
Board of County Commissioners
Delaware County, Indiana



Shannon Henry, President



James King, Vice President



Sherry Riggins, Member

ATTEST:



Steven G. Craycraft, Auditor

EXHIBIT A
DELAWARE COUNTY REZONING CASES APPROVED FOR 2015

MPC 03-15Z	BROWN, MICHAEL M & MELINDA G
ADDRESS:	12101 W CR 650 S
TOWNSHIP:	SALEM
REQUEST:	R-1 RESIDENTIAL ZONE TO F FARMING ZONE
MPC ACTION:	FAVORABLE RECOMMENDATION (6-0-0-3)
DATE:	8-6-2015
COUNTY COM. ACTION:	ADOPTED (3-0)
DATE:	8-17-2015

Farming

Farming

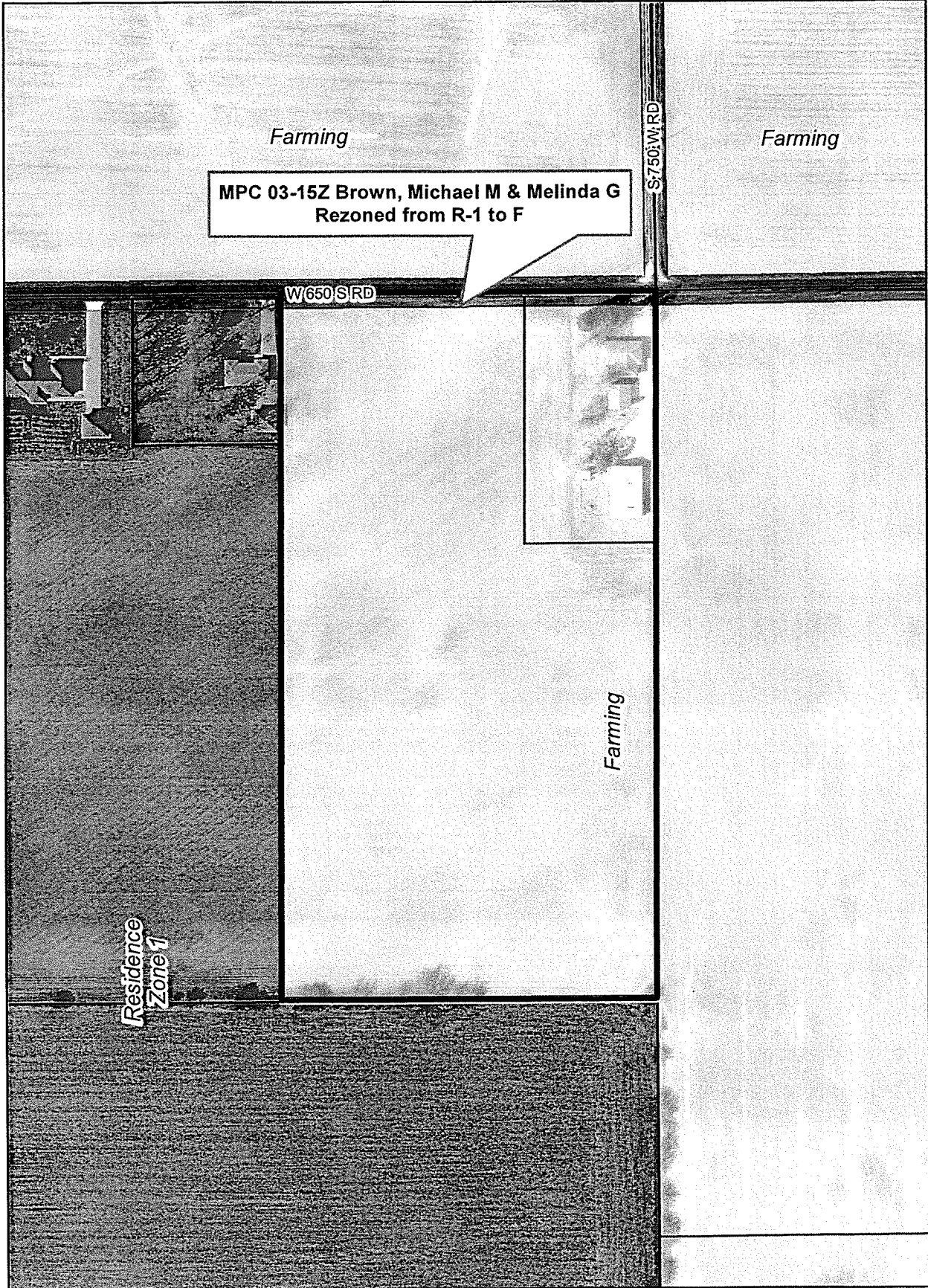
**MPC 03-15Z Brown, Michael M & Melinda G
Rezoned from R-1 to F**

S:750;W:RD

W:650;S:RD

Farming

*Residence
Zone 1*



**REPORT TO THE BOARD OF COMMISSIONERS
OF
DELAWARE COUNTY, INDIANA**

February 9th, 2016

To The Honorable:

Board of County Commissioners of Delaware County, Indiana

Dear Council Members:

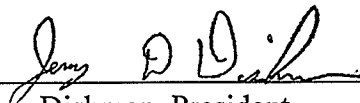
In accordance with the provisions of the Delaware County Comprehensive Zoning Ordinance, Article XI, Section 3, Subsection E, the Delaware-Muncie Metropolitan Plan Commission hereby submits to you copies of portions of the Official Zone Maps for Delaware County, Indiana, showing the location of all zoning changes acted upon by the Plan Commission and adopted by the Board of County Commissioners of Delaware County, Indiana, during the year of 2015; a listing of such changes is attached herein as Exhibit "A".

The Plan Commission approved the Official Zone Maps for Delaware County, Indiana, as updated to reflect the 2015 Official Zone Maps for Delaware County, Indiana on the 4th day of February, 2016 by a vote of 7 yeas and 0 nays.

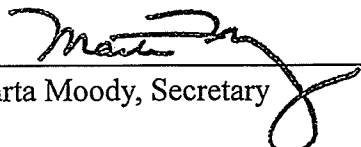
Dated this 9th day of February, 2016.

**DELAWARE-MUNCIE METROPOLITAN
PLAN COMMISSION**

BY:



Jerry Dishman, President



Marta Moody, Secretary