

ORIGINAL

RESOLUTION NO. 2007-016

BEING A RESOLUTION OF THE BOARD OF COMMISSIONERS OF DELAWARE COUNTY,
INDIANA, REGARDING APPROVAL
OF THE PRAIRIE CREEK MASTER PLAN

- WHEREAS, state law authorizes the preparation of a long range comprehensive plan and provides for amendments to such plan as deemed necessary from time to time; and
- WHEREAS, the Muncie-Delaware County Comprehensive Plan, adopted in 2000, recommended that a master plan be created for the Prairie Creek Reservoir area to be incorporated into the Comprehensive Plan; and
- WHEREAS, the Prairie Creek Master Plan, and it's development process, has included significant research, analysis, citizen participation and public review, notice has been given as required by law, and responsive modifications have been included; and
- WHEREAS, the Delaware-Muncie Metropolitan Plan Commission favorably recommended approval of the Prairie Creek Master Plan by unanimous vote at the June 7, 2007 Regular Monthly Meeting.

NOW, THEREFORE, BE IT RESOLVED by the Board of Commissioners of Delaware County, Indiana as follows:

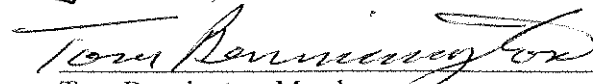
Section 1. That the Muncie-Delaware County Comprehensive Plan is intended to be used as a policy guide for alleviating and preventing problems created by urban sprawl; preserving agricultural land and farming operations; redeveloping and revitalizing existing urban neighborhoods; implementing thoroughfare improvements; encouraging economic development; preserving and protecting the natural environment; and enhancing the attractiveness of the community.

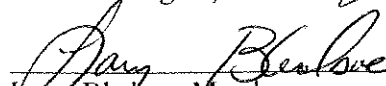
Section 2. That the Prairie Creek Master Plan shall be approved, and considered incorporated by reference as a part of the Muncie-Delaware County Comprehensive Plan, to be used as a long range planning tool that provides a framework for responsible development and that protects and enhances the best features of the Prairie Creek area.

Section 3. That this resolution is hereby adopted this 18 day of June, 2007.

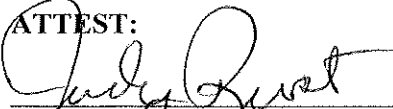
BOARD OF COMMISSIONERS
DELAWARE COUNTY, INDIANA:


John Brooke, President


Tom Bennington, Member


Larry Bledsoe, Member

ATTEST:


Judy Rust, Auditor
Delaware County, Indiana

Prairie Creek Master Plan

a muncie-delaware county
comprehensive plan and white river
watershed management plan
implementation measure

Prairie Creek Master Plan

- The Comprehensive Plan stated the Prairie Creek area is a very special regional amenity and a study should be conducted to help plan its long-term future. The Plan suggested the following issues should be examined:
 - Environmental amenity preservation areas
 - Utility extension alternatives
 - Other infrastructure requirements
 - Alternative development patterns including the provision of upscale housing sites

Prairie Creek Master Plan

- The White River Watershed Management Plan calls for a Prairie Creek master plan that achieves a balance between development and resource protection needed for a subwatershed that provides drinking water where the Plan should address:
 - ⊗ Urban sprawl
 - ⊗ Recreation on the Reservoir
 - ⊗ Loss of Woodlands

Plan Justification

- The positive effects of parks and accessible natural areas make them important contributors to a community's health and economic vitality.
- Owners of small companies cited recreation and parks as the highest priority in choosing where to locate their businesses.

(Crompton, John L., Lisa L. Love, and Thomas A. More. 1997. An empirical study of the role of recreation, parks and open space in companies' (Re) location decisions. *Journal of Park and Recreation Administration*, pages 37-58.)

Plan Justification

- There are health care cost benefits for those who exercise regularly and they carry over to a community's economic prosperity.
- A National Park Service study indicates that regular exercise can lead to 14% fewer healthcare claims, 30% fewer days in the hospital and 41% fewer claims of more than \$5,000. (Greenways Incorporated, p.14)

Plan Justification

- Developing in important watersheds can reduce the abilities of the natural waterways to control flooding, filter out toxins & nutrient pollutants, trap sediments and support wildlife & plant species.
- The amount of impervious surface in a watershed significantly impacts the quality of the water and the health of the stream ecosystem.
- As little as 11% of the ground covered by impervious surfaces such as roads and buildings can adversely impact this condition.

Plan Justification

- Currently the Prairie Creek watershed is at 1.5 percent impervious surface runoff into the streams that feed Prairie Creek Reservoir.
- Maintaining a level below 10% is critical to prevent degradation.
- Maintaining control now prevents more costly, lengthy rehabilitations in the future.

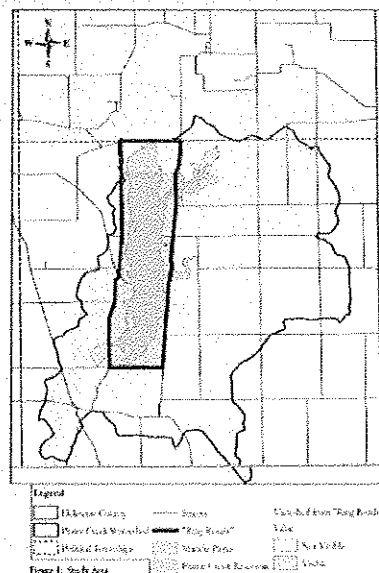
Plan Justification

- Providing infrastructure and other public services to outlying development may cost more than the development produces in tax revenues.
- Farmland generally produces more tax revenue than it costs government to supply services, but residential properties usually consume more service dollars than they generate.

Plan Justification

- Clean water, animal and plant habitat and natural landscapes, especially water bodies, are increasingly rare in our environment.
- It is a basic belief that our community has an obligation to ensure that these gifts are well cared for so they may be passed on to future generations.

Study Area



Plan Process

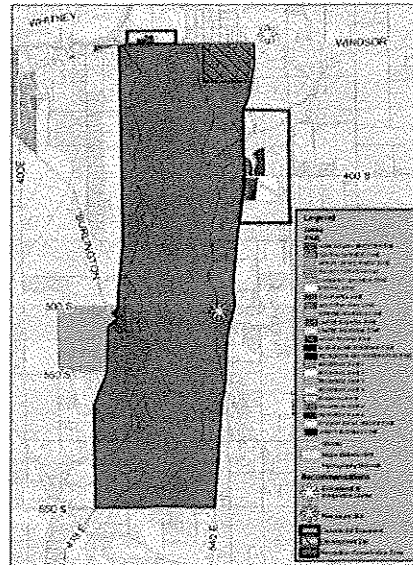
- Partnership created, Steering Committee formed
- BSU Graduate Interns for background, inventory and research
- Surveys – countywide and on website
- Workshop with specialty consultants
- Focus Groups
- Public Meetings & more survey input
- Synthesis and Draft Plan preparation

The survey results were reviewed and grouped into 3 categories for further study – called the focus groups.

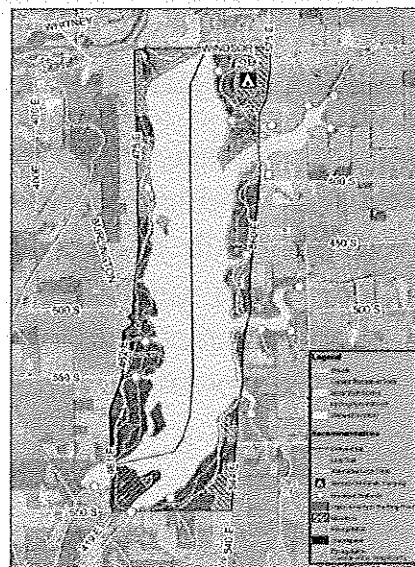
The
Conservation/
Environment
Focus Group

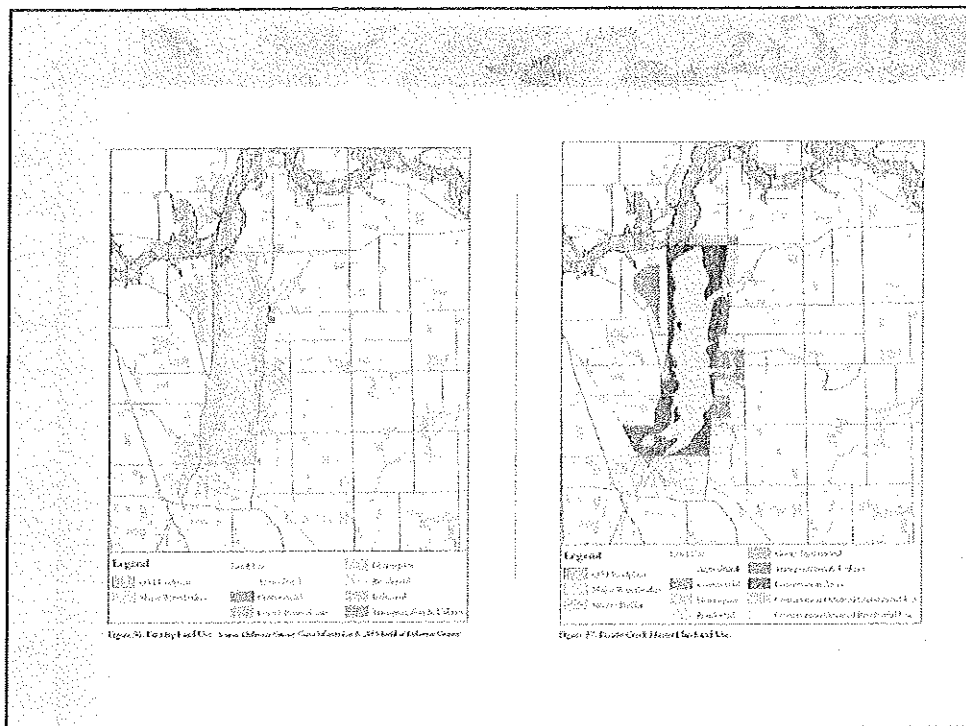


The Economic Development Focus Group



The Recreation Focus Group





Master Plan Mission

- The mission of the Prairie Creek Master Plan is to provide guidance for responsible, ecologically sound development that considers quality of life and the protection and enhancement of Prairie Creek Reservoir and supporting watershed as an asset recognizing the reservoir's primary purpose as a secondary drinking water source for the City of Muncie.



Master Plan Key Elements

- Protecting the future of the park and reservoir as community assets entails extending the city's lease with IAWC beyond the 2021 termination of the current lease and purchasing the land if it becomes available for sale. These measures are essential to ensure that both public access to the area and its ecological health continues.



Master Plan Key Elements

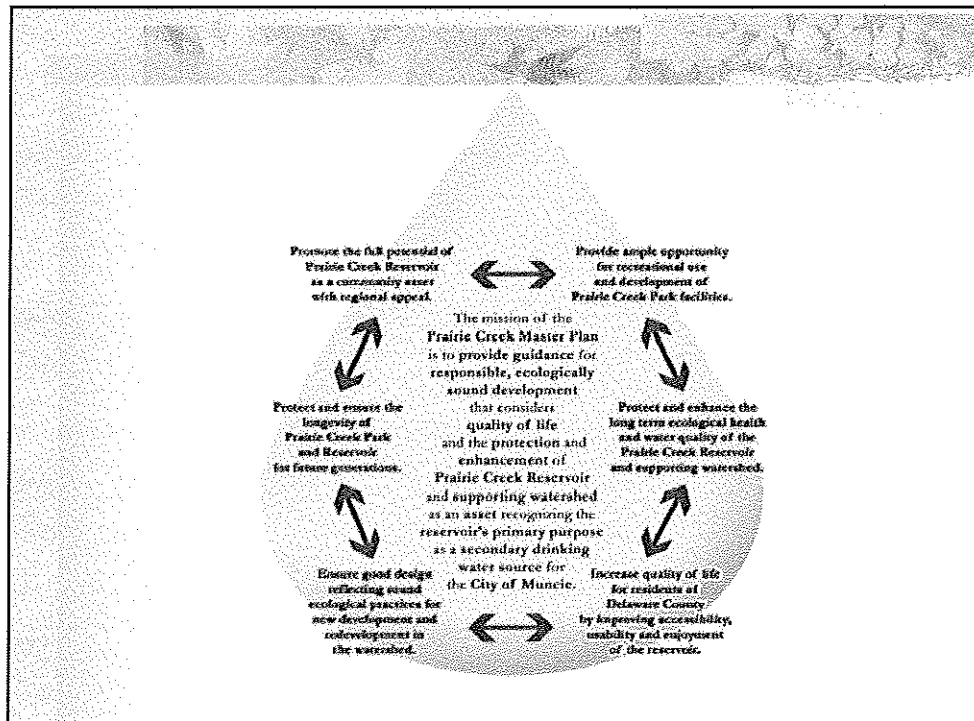
- Water quality in the watershed is a fundamental concern. Conservation measures must be extended to limit pollution. The impact of development must be mitigated through regulations and creative design. On-site wastewater disposal systems are one source of pollution that needs to be addressed immediately. Measures to reduce sedimentation and accompanying nutrient and pesticide loading in the reservoir should continue and expand.

Master Plan Key Elements

- Enhance the value of the park and reservoir as an economic, aesthetic (quality of life) and recreational asset for our community. The reservoir and park have regional appeal that should be capitalized on through planning and marketing of special events. The park facilities are in need of an upgrade and should receive priority funding.

Master Plan Key Elements

- Implementation of this plan should involve public education, amending ordinances, the forming of public and private partnerships and the cooperation of all involved entities.



Master Plan

This section describes the Prairie Creek Master Plan and recommendations. The recommended Master Plan elements are firmly based on the guiding principle, and input from the steering committee, focus groups, and the public.

Elements of the Prairie Creek Master Plan are presented in the following manner:

- Mission Statement
- Goals & Objectives
- In-depth explanation of the Objectives - *not included in this copy.*

Mission Statement

The mission of the Prairie Creek Master Plan is to provide guidance for responsible, ecologically sound development that considers quality of life and the protection and enhancement of Prairie Creek Reservoir and supporting watershed as an asset recognizing the reservoir's primary purpose as a secondary drinking water source for the City of Muncie.

Goals & Objectives

General statement: These are the Goals and Objectives of our Master Plan. Goals are statements of desired future conditions. Objectives describe measurable methods of accomplishing the goals. Some Objectives support more than one Goal and are therefore listed more than once. All of the Goals are of equal importance and are not listed in order of priority.

Goal A: Protect and ensure the longevity of Prairie Creek Park and Reservoir for future generations.

Objectives:

1. Encourage the City of Muncie to pursue extending the lease for Prairie Creek Park with the Indiana-American Water Company.
2. Before the land inside the "ring roads" becomes available, establish an agreement for first right of refusal that is embraced by both the City of Muncie and Delaware County.
3. If the land inside the "ring roads" and/or other adjacent IAWC properties goes up for sale, purchase them.
4. Encourage 501(c)3's, nonprofit organizations, to help gather resources to protect and promote Prairie Creek Reservoir and the long term transition envisioned in this plan.
5. Work with relevant existing community entities for the implementation of the objectives in this master plan.

Goal B: Protect and enhance the long term ecological health and water quality of the Prairie Creek Reservoir and supporting watershed.

Objectives:

1. Control developmental impacts in immediate vicinity of the reservoir.
 - a. Rezone the area within the "ring road" to the conservation/recreation zone.
 - b. Encourage owners of properties outside the "ring roads" that are used, could be used, and/or land banked for purposes such as habitat preserves, conservation areas, greenspace, and farmland conservation to rezone those properties to the conservation/



- recreation zone. (See expanded Objectives, whereby the Plan Commission could offer to do the rezoning for these properties as an incentive.)
- c. Amend local ordinances to ensure that no large scale developments can occur without the existence of sewer and water utilities, or equivalent alternatives.
 - d. Initiate policies and/or amend ordinances as applicable for new development to ensure that no individual on-site sewage disposal systems (OSDS) may be located within the “ring road” boundary.
 - e. Develop and implement a program that is a joint effort between the Bureau of Water Quality and Delaware County Health Department to investigate and improve, as needed, water quality in the greater New Burlington area.
2. Reduce sedimentation and accompanying nutrient and pesticide loading in the reservoir.
 - a. Establish and manage constructed wetlands before the bays and inlets of Prairie Creek Reservoir.
 - b. Create and maintain 50-foot vegetated buffers around the shoreline of the existing ATV course to mitigate sediment loading and erosion impacts.
 - c. Promote conservation farming practices in the Prairie Creek watershed, including best management practices for drainage, nutrient management, pesticide management, soil conservation, surface water protection, tillage/residue management, and waste management.
 - d. Restore areas where erosion has occurred.
 - e. Support and augment where possible the establishment of 120’ wide vegetated buffers on each side of streams and ditches with permanent flows, and 20’-30’ wide on each side of intermittent streams and ditches in order to reduce sediment and nutrient loading to stay the progress of eutrophication of the reservoir.
 3. Develop and promote a program to educate people about: 1) proper on-site wastewater treatment system maintenance, 2) the health ramifications from failed/failing individual on-site wastewater treatment systems and 3) alternative sewage/wastewater treatment systems.
 4. Support/enhance enforcement of existing laws (410 IAC 6-8.1) governing residential on-site sewage disposal systems, including options for funding relief.
 5. Increase biodiversity in and around the reservoir.
 - a. Establish a Land Restoration-Revegetation Management Plan.
 - i. Establish a Flora Assessment Study for the area within the “ring roads”.
 - ii. Restore, enhance, and reestablish the historical native plant communities of the Tipton Till Plain in the area surrounding Prairie Creek Reservoir.
 - b. Create wetland and improve aquatic habitats in Prairie Creek Reservoir to increase biodiversity.

Goal C: Ensure good design reflecting sound ecological practices for new development and redevelopment in the watershed.

Objectives:

1. Amend local ordinances to ensure that no large scale developments can occur without the existence of sewer and water utilities or equivalent alternatives.
2. Develop an ordinance amendment requiring all new housing developments in the Prairie Creek Watershed to meet conservation design standards.
3. Establish model plat restrictions that ensure use of sound ecological practices, and require

- their use on any land in the area that gets platted.
4. Encourage private landowners to use the model plat restrictions as deed restrictions to ensure sound ecological practices on individual properties.
 5. Encourage and enforce best management practices for sediment reduction during construction in the watershed.
 6. Amend or adopt local ordinances to require that lots are of sufficient size to accommodate both the initial OSDS and repair/replacement space; both spaces must remain uncompromised and viable.
 7. Protect existing on-site wastewater treatment systems that are not in failure.
 - a. Require all on-site wastewater treatment system repairs to meet new construction standards for on-site wastewater treatment systems.
 - b. Adopt an ordinance that requires all building permits to include an on-site wastewater treatment system review by the Health Department.¹
 8. Amend local ordinances to coordinate the requirements/permitting processes for stormwater control when soil types require perimeter drains for an OSDS.

Goal D: Promote the full potential of Prairie Creek Reservoir as a community asset with regional appeal.

Objectives:

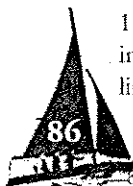
1. Expand promotion of Prairie Creek Park as a visitor destination.
2. Develop and enhance wayfinding and marketing devices, including signage, maps, brochures, and websites, to assist people in locating Prairie Creek Reservoir and educating the public about available recreational opportunities.
3. Promote the development of special events that enhance the community service/amenity value and the attraction destination/economic development potential at Prairie Creek Reservoir.
4. Establish fair regulations for campers that encourage attractive short-term use of campsites at Prairie Creek Park.
5. Capitalize on and promote an opportunity for unique overnight accommodations.
6. Encourage the development of a specialty restaurant located on the east side of the reservoir with view of the Sailing Club.
7. Investigate the feasibility of design standards, overlay districts, planned unit developments, etc. that provide a mechanism to maintain and to capitalize on (from an economic development standpoint) the rural, naturalized character of the Prairie Creek area.
8. Investigate the feasibility of a conference center/hotel that capitalizes on the natural character of the Prairie Creek area.

Goal E: Provide ample opportunity for recreational use and development of Prairie Creek Park facilities.

Objectives:

1. Balance the recreation needs for active and passive activities at Prairie Creek Park.
2. Develop walking/bicycle trails that encircle Prairie Creek Reservoir.
3. Retain and enhance the separate trail system for horseback riders.

¹ While this objective focuses on on-site wastewater treatment systems, the Health Department should be included in the permit process for all new construction for additional potential environmental hazards including but not limited to lead paint.



4. Design children's play areas that emphasize learning and connections to the natural environment.
5. Provide an access area for non-motorized boats.
6. Comply with ADA (Americans with Disabilities Act) standards for a "natural park".
7. Promote the establishment of 120' wide vegetated buffers on each side of streams and ditches with permanent flows, and 20'-30' wide on each side of intermittent streams and ditches in order to reduce sediment and nutrient loading to maintain acceptable levels in the reservoir for human recreational use.

Goal F: Increase quality of life for residents of Delaware County and enhance visitor experience by improving accessibility, usability and enjoyment of the reservoir.

Objectives:

1. Improve visitor access to Prairie Creek Reservoir.
 - a. Designate a point of entry and gateways for Prairie Creek Park.
 - b. Designate route(s) for best access.
 - c. Make needed road improvements.
2. Promote bike and pedestrian use of Prairie Creek Reservoir.
 - a. Develop bike and pedestrian trails that encircle the reservoir.
 - b. Include bike lanes in the needed improvements to the road structure of the "ring roads".
 - c. Install pervious surface parking facilities adjoining bike trails for park and peddle opportunities in the park.
 - d. Connect trail system to Cardinal Greenway.
3. Use Prairie Creek Reservoir as a focus to educate the public about environmental issues including water quality, compatible development, and wildlife habitat needs.
4. Encourage the development of educational programs and workshops that would take place at Prairie Creek Park.
5. Promote the use of Prairie Creek Park as an outdoor laboratory for educational purposes.

I encourage you to visit:

http://www.co.delaware.in.us/watershed/PC_master_plan.htm

where you can download the Prairie Creek Master Plan
in its entirety or just select sections.



This section is intended to address implementation for each of the Plan's objectives, identify leaders and participants, and recommend possible funding sources. The critical players/participants indicate groups and entities that have been identified as important to the implementation process, but should not be taken as all inclusive. Many objectives require community wide support and participation. Targeted time frames are expressed in years and indicate the ideal completion time of the objective. Some objectives should be started in the suggested span of years and are ongoing from that point.

Goal A: Protect and ensure the longevity of Prairie Creek Park & Reservoir for future generations.

Objectives	Recommended "Leaders"	Critical Players/ Participants	Potential Funding Sources	Targeted Time Frame
1. Encourage the City of Muncie to pursue extending the lease for Prairie Creek Park with the Indiana-American Water Company.	City of Muncie	LAWC Park Board County Comm. Friends of PCR	N/A	0-2
2. Before the land inside the "ring roads" becomes available, establish an agreement for first right of refusal that is embraced by both the City of Muncie and Delaware County.	City of Muncie	LAWC County Comm.	N/A	0-2
3. If the land inside the "ring roads" and/or other adjacent LAWG properties go up for sale purchase them.	City of Muncie	LAWC County Comm.	EDIT EDI	ongoing
4. Encourage 501(c)3's, nonprofit organizations, to help gather resources to protect and promote Prairie Creek Reservoir and the long term transition envisioned in this plan.	RTC Director PCP Supt.	RTC Friends of PCR CGI WRWP	N/A	0-2 and ongoing
5. Work with relevant existing community entities for the implementation of the objectives in this master plan.	Park Committee	all	N/A	ongoing

Goal B: Protect and enhance the long term ecological health and water quality of the Prairie Creek Reservoir and supporting watershed.

Objectives	Recommended "Leaders"	Critical Players/ Participants	Potential Funding Sources	Targeted Time Frame
1. Control developmental impacts in immediate vicinity of the reservoir.				
a. Rezone the area within the "ring road" to the conservation/recreation zone.	DMMPC County Comm.	Property owners (including LAWC)	N/A	0-2
b. Encourage owners of properties outside the "ring roads" that are used, could be used and/or land banked for purposes such as habitat preserves, conservation areas, greenspace, and farmland conservation to rezone those properties to the conservation/recreation zone.	DMMPC County Comm.	SWCD RTC Property owners Auditor	N/A	0-2
c. Amend local ordinances to ensure that no large scale developments can occur without the existence of sewer and water utilities, or equivalent alternatives.	DMMPC County Comm.	Health Dept. Sanitary districts	N/A	0-2
d. Initiate policies and/or amend ordinances as applicable to ensure that no individual OSDS for new development may be located within the "ring road" boundary.	County Comm. Health Dept.	DMMPC Park Board LAWC	N/A	0-2
e. Develop and implement a program that is a joint effort between the Bureau of Water Quality and the Delaware County Health Department to investigate and improve as needed water quality in the greater New Burlington area.	BWQ Health Dept.	WRWP SWCD Property owners	special assessments IDEM/EPA	develop in 0-2 and implement program in 2-5
2. Reduce sedimentation and accompanying nutrient and pesticide loading in the reservoir.				
a. Establish and manage constructed wetlands before the bays and inlets of Prairie Creek Reservoir.	SWCD	Nonprofits WRWP LAWC Park Board	319 funds	0-5

Objectives	Recommended "Leaders"	Critical Players/ Participants	Potential Funding Sources	Targeted Time Frame
b. Create and maintain 50' vegetated buffers around the shoreline of the existing ATV course to mitigate sediment loading and erosion impacts.	Park Board	LAWC WRWP course users	user fee 319 funds	0-2
c. Promote and enforce conservation farming practices in the Prairie Creek watershed, including best management practices for drainage, nutrient management, pesticide management, soil conservation, surface water protection, tillage/residue management, and waste management.	SWCD NRCS	WRWP RTC Extension Office Property owners Farm Bureau	NRCS programs 319 cost share	ongoing
d. Restore areas where erosion has occurred.	SWCD	WRWP LAWC Park Board nonprofits property owners	319 cost share IDEM NRCS	ongoing
e. Support and augment where possible the establishment of 120' wide vegetated buffers on each side of streams and ditches with permanent flows, and 20'-30' wide on each side of intermittent streams and ditches in order to reduce sediment and nutrient loading to stay the progress of eutrophication of the reservoir.	SWCD	Surveyor property owners Drainage Board WRWP NRCS	ditch assessments 319 cost share NRCS	0-5
3. Develop and promote a program to educate people about: 1) proper OSDS maintenance, 2) the health ramifications from failed/failing systems and 3) alternative sewage/wastewater treatment systems.	Health Dept. SWCD	WRWP MSD/BWQ County Comm. Nonprofits	319 funds	Develop in 0-2 and promote ongoing
4. Support/enhance enforcement of existing laws (410 IAC 6-8.1) governing residential on-site sewage disposal systems including options for funding compliance relief.	OSDS Committee (to be established by County Comm.)	Health Dept. DMMP SWCD/WRWP MSD concerned citizens	IDEM EPA private funds	Develop in 0-2 and ongoing

Objectives	Recommended "Leaders"	Critical Players/ Participants	Potential Funding Sources	Targeted Time Frame
5. Increase biodiversity in and around the reservoir.	WRWP	BSU Park Board LAWC property owners nonprofits	EPA 319 funds	0-5
a. Establish a Land Restoration-Revegetation Management Plan.				
b. Create wetland and improve aquatic habitats in Prairie Creek Reservoir to increase biodiversity.	SWCD	WRWP Park Board LAWC nonprofits	319 funds DNR	0-5

Goal C: Ensure good design reflecting sound ecological practices for new development and redevelopment in the watershed.

Objectives	Recommended "Leaders"	Critical Players/ Participants	Potential Funding Sources	Targeted Time Frame
1. Amend local ordinances to ensure that no large scale developments can occur without the existence of sewer and water utilities or equivalent alternatives.	DMMPC County Comm.	Health Dept. sanitary districts	N/A	0-2
2. Develop an Ordinance amendment requiring all new housing developments in the Prairie Creek Watershed to meet conservation design standards.	DMMPC County Comm.	Health Dept. property owners developers local surveyors	N/A	0-2
3. Establish model plat restrictions that ensure use of sound ecological practices, and require their use on any land in the area that gets platted.	DMMPC	County Comm. Health Dept. BSU	N/A	0-2
4. Encourage private landowners to use the model plat restrictions as deed restrictions to ensure sound ecological practices on individual properties.	DMMPC SWCD	WRWP property owners RTC local surveyors title companies	N/A	ongoing

Objectives	Recommended "Leaders"	Critical Players/ Participants	Potential Funding Sources	Targeted Time Frame
5. Encourage and enforce best management practices for sediment reduction during construction in the watershed.	County Comm. SWCD	WRWP DMMP Surveyor County Engineer Building Comm.	319 grant stormwater assessment	ongoing
6. Amend or adopt local ordinances to ensure lots of sufficient size to accommodate both the initial OSDs and repair/replacement space and ensure that the OSDs and replacement fields remain uncompromised and usable.	DMMP	Health Dept. County Comm.	N/A	0-2
7. Protect existing OSDs that are not in failure.				
a. Require all on-site wastewater treatment system repairs to meet new construction standards for on-site wastewater treatment systems.	Health Dept.	OSDs installers	N/A	ongoing
b. Adopt an ordinance that requires all building permits to include an OSDS review by the Health Department.	Health Dept.	County Comm. Building Comm.	N/A	0-2
8. Amend local ordinances to coordinate the requirements/permitting processes for stormwater control when new types and require performance designs for an OSD.	County Engineer Health Dept.	County Comm. DMMP Building Comm.	N/A	0-2

Goal D: Promote the full potential of Prairie Creek Reservoir as a community asset with regional appeal.

Objectives	Recommended "Leaders"	Critical Players/ Participants	Potential Funding Sources	Targeted Time Frame
1. Expand promotion of Prairie Creek Park as a visitor destination.	Visitor's Bureau	Park Board City of Muncie Chamber County Comm.	hotel/motel tax EDIT	ongoing

Objectives	Recommended "Leaders"	Critical Players/ Participants	Potential Funding Sources	Targeted Time Frame
2. Develop and enhance wayfinding and marketing devices, including signage, maps, brochures, and websites, to assist people in locating Prairie Creek Reservoir and educating the public about available recreational opportunities.	Visitor's Bureau Park Board	DMMP City of Muncie County Comm. Chamber	Hotel/motel tax EDIT	0-2 and ongoing
3. Promote the development of special events that enhance the community service/amenity value and the attraction destination/economic development potential at Prairie Creek Reservoir.	Park Board Visitor's Bureau	Muncie Civic PC Park Supl. CGI, RTC Minnetista City of Muncie County Comm. Chamber	User fees Private funds EDIT	0-5 and ongoing
4. Establish fair regulations for campers that encourage attractive short-term use of campsites at Prairie Creek Park.	PC Park Supl. Park Board	Visitor's Bureau City of Muncie	N/A	0-5 and ongoing
5. Capitalize on and promote opportunities for unique overnight accommodations.	Park Board inside park and private outside park	Chamber Visitor's Bureau DMMP County Comm.	EDIT Grants private funds	5-10
6. Encourage the development of a specialty restaurant located on the east side of the reservoir with view of the Sailing Club.	Private	Park Board LAWC Chamber City of Muncie County Comm.	Private funds	5-10
7. Investigate the feasibility of design standards, overlay districts, planned unit developments, etc. that provide a mechanism to maintain and to capitalize on (from and economic development standpoint) the rural, naturalized character of the Prairie Creek area.	DMMP BSU	Property owners City of Muncie County Comm. Chamber	N/A	5-10
8. Investigate the feasibility of a conference center/hotel that capitalizes on the natural character of the Prairie Creek area.	private	City of Muncie County Comm. Chamber	private	>10 yrs

Goal E: Provide ample opportunity for recreational use and development of Prairie Creek Park facilities.

Objectives	Recommended "Leaders"	Critical Players/ Participants	Potential Funding Sources	Targeted Time Frame
1. It is recommended that the Prairie Creek part of the Muncie Park Plan should address a site development strategy that maintains a balance whereby the west shore, excepting the ATV course, be devoted to passive recreation in order to preserve the undeveloped character that currently exists there.	Park Board	PC Park Supt. IAWC	N/A	ongoing
2. Develop walking/bicycle trails that encircle Prairie Creek Reservoir.	Park Board	County Engineer CGI IAWC	DNR RTP	0-5
3. Retain and enhance the separate trail system for horseback riders.	Park Board	horse riders club IAWC	private	ongoing
4. Design children's play areas that emphasize learning and connections to the natural environment.	Park Board	Park Committee Schools Minnetrista BSU nonprofits	public and private grants	2-5
5. Provide an access area for non-motorized boats.	Park Board	IAWC PC Park Supt.	N/A	2-5
6. Comply with ADA (Americans with Disabilities Act) standards for a "natural park".	Park Board	PC Park Supt.	N/A	ongoing
7. Promote the establishment of 120' wide vegetated buffers on each side of streams and ditches with permanent flows, and 20' -30' wide on each side of intermittent streams and ditches in order to reduce sediment and nutrient loading to maintain acceptable levels in the reservoir for human recreational use.	WRWP	Surveyor Drainage Board Owners SWCD NRCS	NRCS 319 cost share Ditch Assessment	0-5

Goal F: Increase quality of life for residents of Delaware County and enhance visitor experience by improving accessibility, usability and enjoyment of the reservoir.

Objectives		Recommended "Leaders"	Critical Players/ Participants	Potential Funding Sources	Targeted Time Frame
1.	Improve visitor access to Prairie Creek Reservoir.	County Engineer PC Park Supt.	DMMP Visitor's Bureau Park Board County Comm.	LRS STP	designate in 0-2 and phased improvement over next 10 yrs.
a.	Designate a point of entry and gateways for Prairie Creek Park.				
b.	Designate route(s) for best access.				
c.	Make needed road improvements.				
2.	Promote bike and pedestrian use of Prairie Creek Reservoir.	Park Board County Engineer	County Engineer CGI LAWC	DNR RTP	0-5
a.	Develop bike and pedestrian trails that encircle the reservoir.				
b.	Include bike lanes in the needed improvements to the road structure of the "ring roads".	County Engineer	DMMP County Comm.	CMAQ RTP STP LRS private funds	phased with trail improvement over next 10 yrs.
c.	Install previous surface parking facilities adjoining bike trails for park and peddle opportunities in the park.	PC Park Supt.	RTC Park Board		
d.	Connect trail system to Cardinal Greenway.	PC Park Spt. CGI	Park Board		
3.	Use Prairie Creek Reservoir as a focus to educate the public about environmental issues including water quality, compatible development, and wildlife habitat needs.	SWCD Park Committee	Park Board BWQ LAWC environmental groups Minnetrista	319 funds other public and private grants	2-5 and ongoing
4.	Encourage the development of educational programs and workshops that would take place at Prairie Creek Park.	Park Committee	Park Board LAWC Muncie Civic Schools Minnetrista	grants and user fees	2-5 and ongoing
5.	Promote the use of Prairie Creek Park as an outdoor laboratory for educational purposes.	Park Committee	Schools Park Board LAWC, BSU	grants	2-5 and ongoing

Acronyms:

BSU denotes Ball State University
Building Comm. refers to the Delaware County Building Commissioner
BWQ denotes the Bureau of Water Quality
CGI denotes Cardinal Greenways Incorporated
Chamber refers to the Delaware County Chamber of Commerce
CMAQ denotes Congestion Mitigation and Air Quality
County Comm. refers to the Delaware County Board of Commissioners
DMMPC denotes the Delaware-Muncie Metropolitan Plan Commission
DNR denotes the Indiana Department of Natural Resources
EDI denotes the Economic Development Initiative of the Federal HUD program
EDIT denotes Economic Development Income Tax
EPA denotes the Environmental Protection Agency
Health Dept. refers to the Delaware County Health Department
IAWC denotes the Indiana-American Water Company
IDEM denotes the Indiana Department of Environmental Management
LRS denotes Local Road and Street
MSD denotes the Muncie Sanitary District
Muncie Civic refers to Muncie Civic Theater
N/A denotes activity requires no money or is to be funded through the normal work activities of the participants
NRCS denotes the Natural Resources Conservation Service
OSDS denotes onsite sewage disposal system
PC Park Supt. Denotes the Prairie Creek Park Superintendent
RTC denotes the Red Tail Conservancy
RTP denotes the Recreational Trail Program
STP denotes Surface Transportation Program
Surveyor refers to the Delaware County Surveyor
SWCD denotes the Soil and Water Conservation District
WRWP denotes the White River Watershed Project